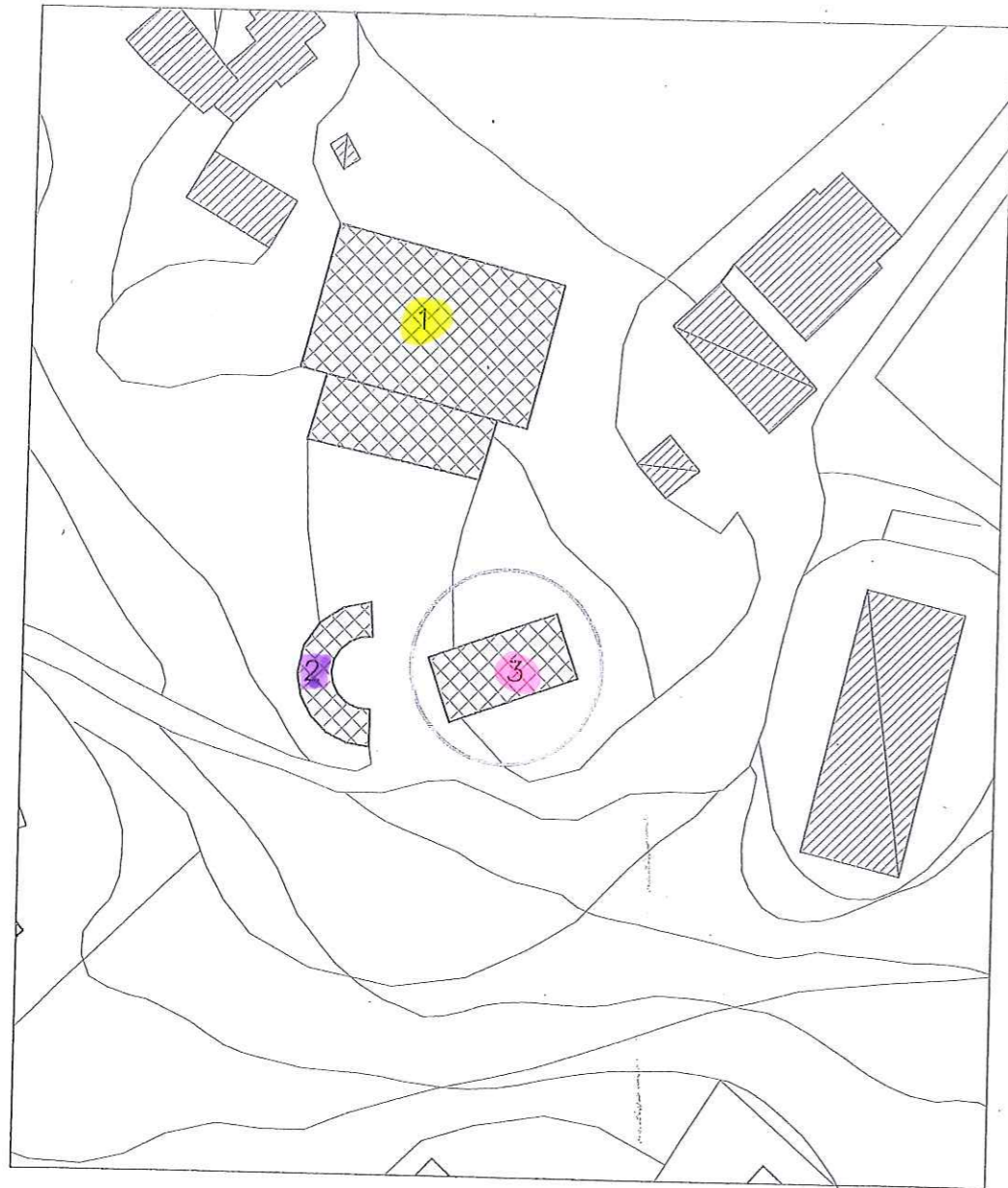
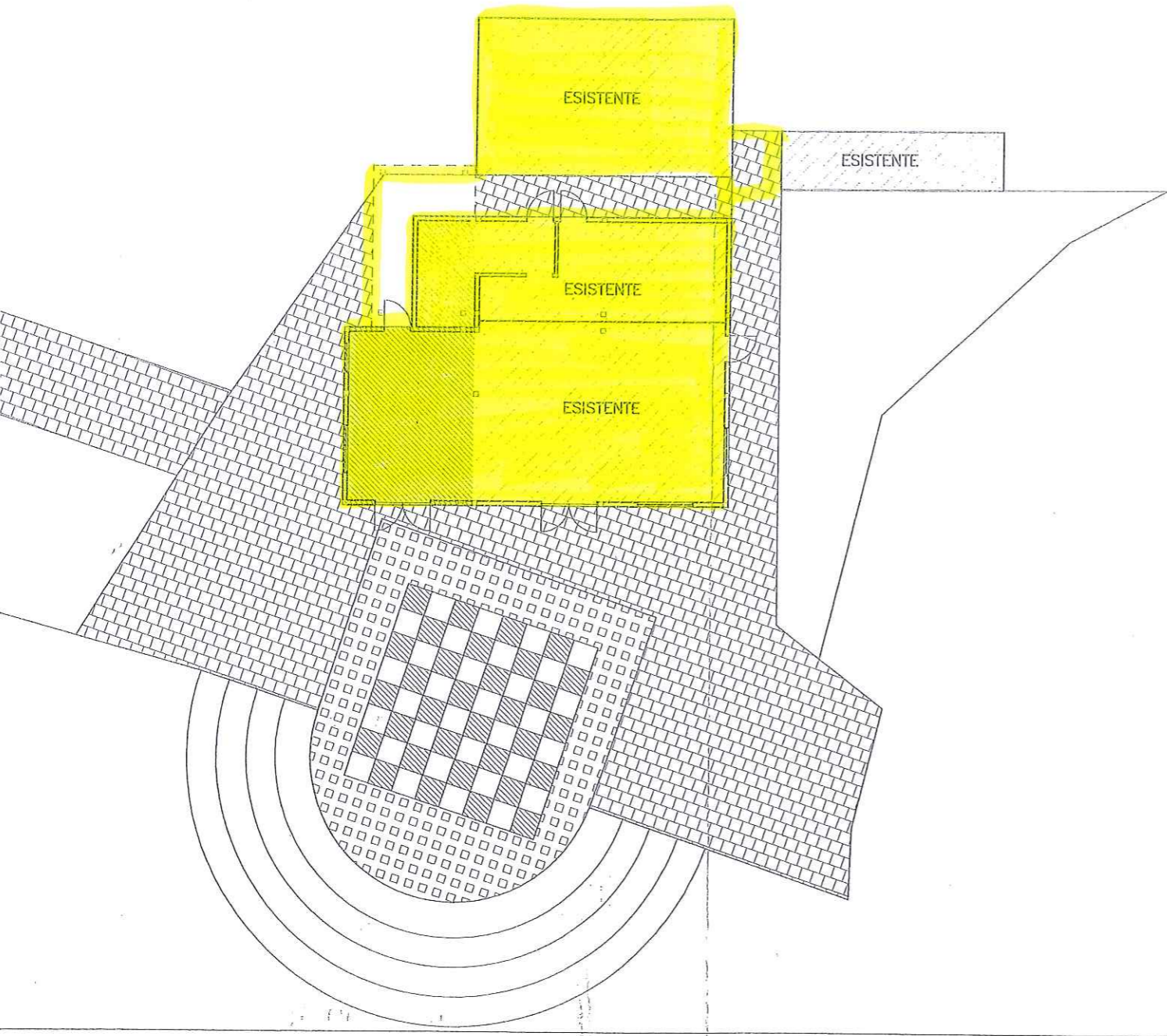


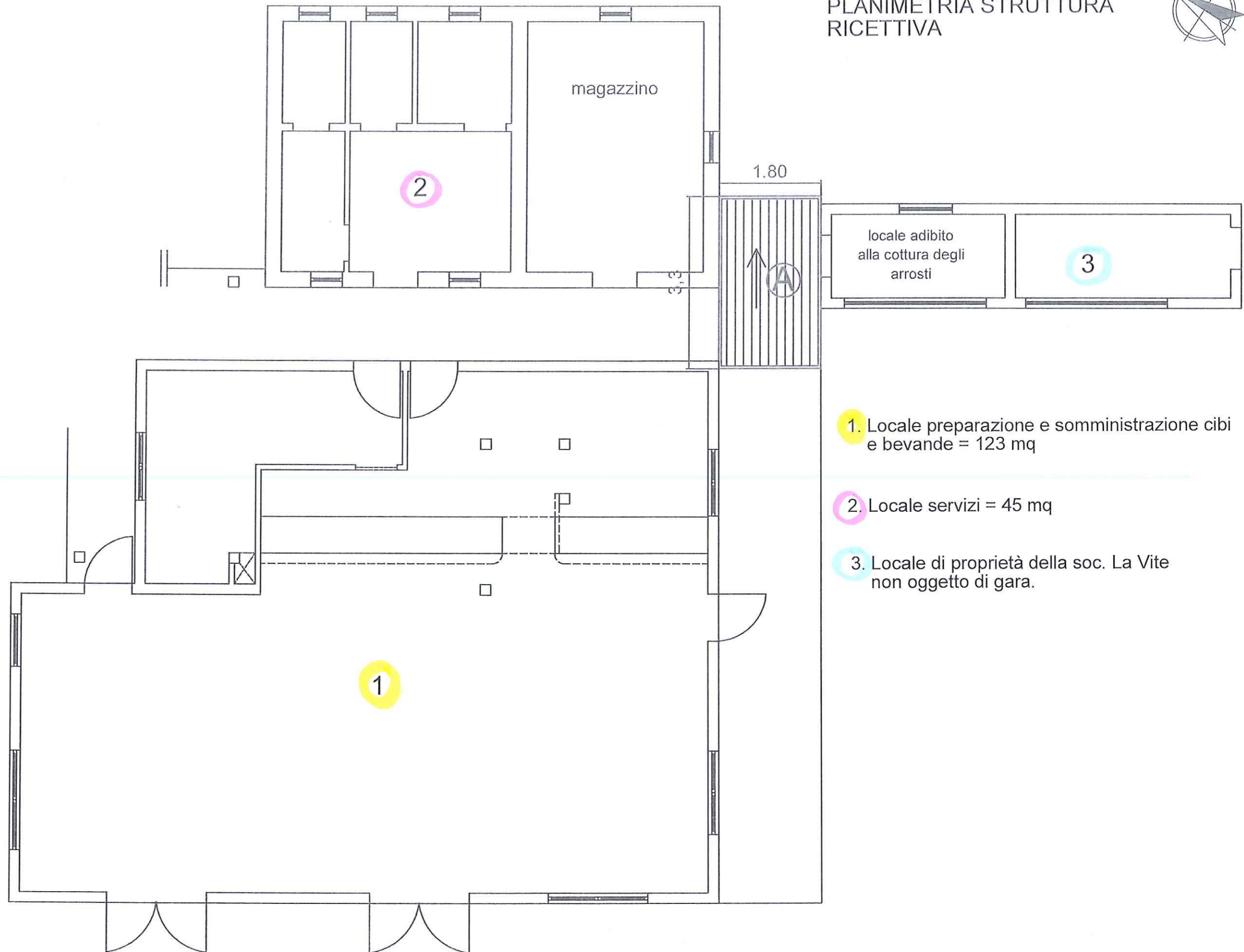
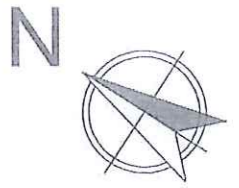
AEROFOTOGRAMMETRICO SCALA 1:1000



-  edifici privati
-  1 campo polivalente
-  2 anfiteatro
-  3 chiosco



PLANIMETRIA STRUTTURA
RICETTIVA



- 1. Locale preparazione e somministrazione cibi e bevande = 123 mq
- 2. Locale servizi = 45 mq
- 3. Locale di proprietà della soc. La Vite non oggetto di gara.